

Fire prevention

Round-the-clock monitoring to ensure safety and security of guests.

A dedicated night watch who conduct checks on the entire boat every 15 minutes and are verified by a QR-based patrol system.

No charging of any unattended electrical items is allowed in cabins. There are dedicated charging available in the saloons which are fully monitored.

Fire detection

Each cabin and communal area is equipped with smoke detectors and fire alarms to ensure early detection of fires.

At least two different systems on each boat to provide coverage in the event of an issue.

Alarms are fully tested on a regular basis.

Detectors are installed in the corridors and engine room to provide warning in case of the presence of carbon monoxide.

Fire suppression

Multiple fire blanket shields are positioned in many areas around the boats.

Placed around the boat we have multiple powder, water, CO2 and foam fire extinguishers.

Staff trained in firefighting with hoses and pumps readily available.

Diving and general safety

Boats are equipped with emergency life rafts with sufficient space available for all guests and crew.

Each boat is equipped with a satellite phone to ensure a communication connection even in the most remote areas as well as long- and short-range radios. EPIRBs, SARTs and flares to transmit location in case of an emergency.

Each boat has multiple trained first-aiders who will be on board for every trip.

There are enough large oxygen cylinders on every boat and dhoni to ensure sufficient oxygen to reach medical assistance from the furthest point of each trip.

Every guest is provided with a complimentary surface marker buoy which they must take on every dive.

Emergency action

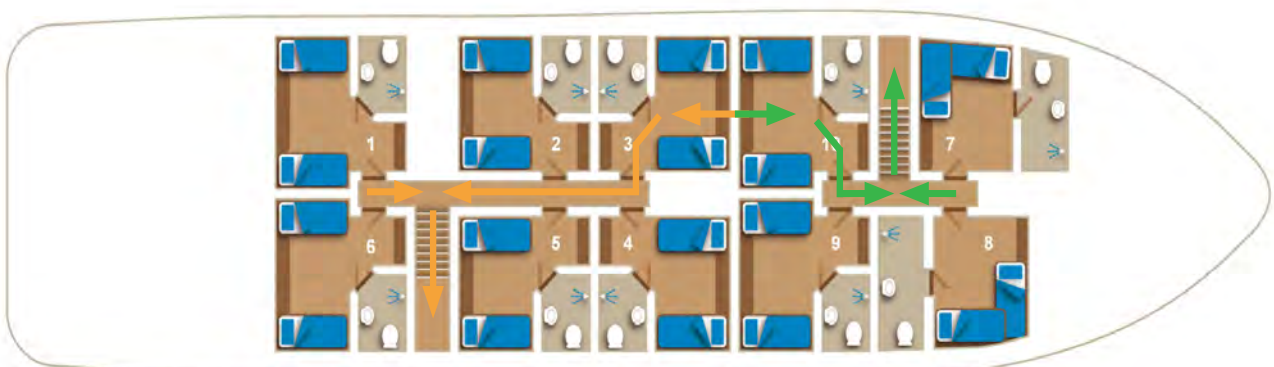
Each cabin has an illuminated emergency plan and there are luminous directional signage to the fire exits.

There is one life jacket per person in every cabin and additional life jackets for every guest at the muster station.

The on-board welcome briefing shows guests all emergency exits in order to familiarise them with the boat's different escape options, of which there are always two.

Safety drills are conducted regularly to demonstrate the necessary procedures in case of emergency.

Each life raft has an emergency radio with distress locator.



Example evacuation plan (Emperor Superior)